

Psychology 200: Psychology as a Natural Science

PSU FALL 2023; **This course is offered this term in HYBRID format**

IN PERSON classes Mondays 9:00 – 10:00am (Classroom TBD)

ONLINE ZOOM Canvas classes Wednesdays 9:00 – 10:00am

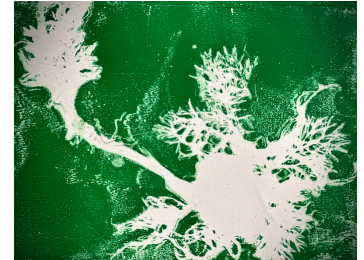
ONLINE review classes Fridays 9:00 – 10:00am

Bill Griesar, Ph.D., **Instructor**; griesar@pdx.edu

Ryan Borashan, Undergraduate **TA**; borashan@pdx.edu

, Undergraduate **TA**;

, **Graduate TA**;



FALL TERM: September 26 – December 8, 2023

Instructor STUDENT HOURS (Online/ZOOM), by appointment (please email)

Graduate TA STUDENT HOURS (Online/ZOOM), by appointment (please email)

TA STUDENT REVIEWS (Online/ZOOM), Fridays, 9:00 – 10:00am

NO TEXTBOOK IS REQUIRED FOR THIS CLASS

Optional text (also used in PSY 204): Lilienfeld, S.O., Lynn, J., Namy, L. & Woolf, N. (2013). *Psychology: From Inquiry to Understanding*. Boston: Pearson. ISBN-10: **0205959989** | ISBN-13: **978-0205959983** | Edition: **3** NOTE THAT THERE IS A CHEAPER BOOKSTORE SPECIFIC VERSION AVAILABLE

ONLINE COURSE CANVAS WEBSITE: There are many useful resources, including syllabus, slides, video reviews, *and required, graded assignments and assessments* available at the course Canvas website. *** ONLINE LINKS AND DESCRIPTIONS HIGHLIGHT CRITICAL INFORMATION FOR QUIZZES AND EXAMS.** Make certain that you know how to log in and find our course.

ANY TECHNICAL ISSUES: Please call (503) 725-HELP for assistance.

Thank you for joining us! Why are you here?

Please take a moment to think about why you're taking this introductory psychology class, and what you hope to get out of the experience.

Course Description:

PSY 200 is one of two introductory psychology courses at PSU (PSY 204 is the other). *This course covers the scientific foundations of human behavior* in areas such as physiological and biological psychology, cognitive, ethical, and emotional development, sensation and perception, learning, consciousness, language and memory. This course also focuses on issues in experimental design and teaches students how to critically evaluate psychological research.

Course Objectives:

At the end of the quarter, this course will be a success if you:

- a) are familiar with some major topics and issues in psychology;
- b) understand the basic scientific methods used in psychological research;
- c) cultivate your abilities to think critically about the course material and its real world application

GRADES: Grades are assigned on a 90+ (A), 80-89 (B), 70-79 (C) and 60-69 (D) point scale. You can earn 107.5 points in this class. ***An A or B is ABOVE AVERAGE, a C is AVERAGE, and a D is BELOW AVERAGE.*** Course points are awarded on the basis of your understanding of material assessed by online quizzes, a midterm and a final exam. More points are earned by participating in discussion forums, and completing an art project and four coloring assignments. Students taking this course pass-fail must maintain a C- average (70%) to receive a passing grade.

*** DEADLINES ARE IMPORTANT: Late work earns half credit. It's difficult in a large class to track late assignments, so after one week late assignments will be zeroed out. No late assignments are accepted after Week Ten of term.**

MIDTERM AND FINAL EXAM (10 points midterm, 22.5 final): The midterm exam will cover all material up to Week Six (Learning). The final exam is comprehensive, but will draw more from material presented after the midterm. Both exams will be available for several days, and you will be able to make one continuous attempt on each.

QUIZZES (20 points): Four online graded quizzes will test a student's knowledge of recent topics covered in the textbook, and in class. Each quiz will be available for several days, and you will be able to make one continuous attempt.

DISCUSSION FORUMS (20 points): Students are required to post their own responses to questions in our ten weekly discussion forums, which cover topics we'll be learning about in Zoom class meetings, online video lectures and other resources and links on Canvas. You're also required to respond to two posts by peers.

Each post must be at least 100 words (~300 max) and you must respond to TWO peers in at least 50 words or more each. FORUM POSTS ARE DUE THURSDAYS (by 11:59pm); peer responses DUE by SUNDAY (by 11:59pm).

COLORING ASSIGNMENTS (20 points): Four graded coloring assignments (as a *.jpg or *.pdf) are due throughout the term. **These assignments are available online. Due dates are found in this syllabus (see below).**

ART PROJECT (15 points): Consider your own experiences, and illustrate, through drawing, painting, sculpture, poetry or music, an instance of confirmation bias or belief perseverance, in yourself or others. *What happened? What did you learn?*

*****PLEASE NOTE: ALL ARTWORK MUST BE ENTIRELY YOUR OWN.***

ACADEMIC HONESTY: Any evidence of cheating or plagiarism will lead to serious academic consequences, including possible failure of the course and/or dismissal from school. Plagiarism is a violation of the **PSU Code of Student Conduct**. *For more information please read the PSU Code of Student Conduct (link online).*

STUDENTS WITH DISABILITIES: If you are a student with a documented disability and registered with the Disability Resource Center (DRC), please contact the instructor immediately to arrange academic accommodations. If you have a disability and have not yet registered with the DRC, please contact the DRC immediately. The DRC is located in SMC, Room 116, and their phone number is (503) 725-4150.

PLEASE NOTE: No incomplete will be assigned without a written formal agreement and timeline related to completion. Incompletes are rarely given, and are based on strict criteria described in the university catalog...

<https://www.pdx.edu/dos/psu-student-code-conduct>

CHALLENGES: ***Look over the course requirements in our syllabus, and online. If you are unclear about what's expected for an assignment, or assessment, please let me know.*** Life DEFINITELY has ups and downs, and everyone struggles sometimes with family, work, and other personal concerns and commitments. But not everyone has access to the same resources, or experiences the world in the same way. If there is a serious, unexpected, documented and significant emergency, please get in touch ❤️! But be aware that we are obligated to treat all students fairly, and that means each of you should ask questions, think ahead and plan for when assignments are due.

Everyone is subject to the same course expectations.

Course Lectures

WEEK ONE (9/25 – 9/29)

Introduction: Science and Pseudoscience in Psychology; History of psychology

Optional Text (Chapter 1, begin Chapter 2)

***NO CLASS MONDAY** (University holiday: Yom Kippur)

***MEET**: ONLINE Wednesday/Friday, all 9 – 10:00am

***POST**: Discussion FORUM by THURSDAY; student responses by SUNDAY

***TAKE**: ONLINE GRADED QUIZ ONE: 9/27 – 10/1

WEEK TWO (10/2 – 10/6)

Research Methods; Optional Text (Chapter 2)

***MEET**: IN PERSON Monday; ONLINE Wednesday/Review Friday, all 9 – 10:00am

***POST**: Discussion FORUM by THURSDAY; student responses by SUNDAY

WEEK THREE (10/9 – 10/13)

Biological Psychology; Optional Text (Chapter 3)

***MEET**: IN PERSON Monday; ONLINE Wednesday/Review Friday, all 9 – 10:00am

***POST**: Discussion FORUM by THURSDAY; student responses by SUNDAY

***TAKE**: ONLINE GRADED QUIZ TWO: 10/11 – 10/15

Quiz covers science and pseudoscience, research methods

***BEGIN**: Coloring assignment 1 (Basic visible structures of the brain)

(*DUE WEEK FOUR on THURSDAY)

WEEK FOUR (10/16 – 10/20)

Sensation & Perception; Optional Text (Chapter 4)

***MEET**: *ONLINE* Monday and Wednesday/Review Friday, all 9 – 10:00am

***SUBMIT**: Coloring assignment 1 DUE THURSDAY

***POST**: Discussion FORUM by THURSDAY; student responses by SUNDAY

***BEGIN**: Coloring assignment 2 (Simple reflex network)

(*DUE WEEK FIVE on THURSDAY)

WEEK FIVE (10/23 – 10/27)

Consciousness; Optional Text (Chapter 5)

***MEET**: IN PERSON Monday; ONLINE Wednesday/Review Friday, all 9 – 10:00am

***SUBMIT**: Coloring assignment 2 DUE THURSDAY

***POST**: Discussion FORUM by THURSDAY; student responses by SUNDAY

***BEGIN**: Coloring assignment 3 (Consciousness)

(*DUE WEEK EIGHT on THURSDAY)

WEEK SIX (10/30 – 11/3)

Learning; Optional Text (Chapter 6)

***MEET:** IN PERSON Monday; ONLINE Wednesday/Review Friday, all 9 – 10:00am

***POST:** Discussion FORUM by THURSDAY; student responses by SUNDAY

WEEK SEVEN (11/6 – 11/10)

Memory and Language; Optional Text (Chapter 8)

***NO CLASS FRIDAY** (University holiday: Veteran's Day)

***MEET:** IN PERSON Monday; ONLINE Wednesday, all 9 – 10:00am

***SUBMIT:** Coloring assignment 3 DUE THURSDAY

***POST:** Discussion FORUM by THURSDAY; student responses by SUNDAY

WEEK EIGHT (11/13 – 11/17)**MIDTERM EXAM** (*Available online 11/10 – 11/19*)

The midterm will cover the (brief) history of psychology, research methods, biological psychology, sensation and perception, consciousness, and learning.

***NO CLASS MONDAY OR WEDNESDAY:** Society for Neuroscience conference

***MEET:** Review Friday, 9 – 10:00am

***POST:** Discussion FORUM by THURSDAY; student responses by SUNDAY

WEEK NINE (11/20 – 11/24)

Language; Optional Text (Chapter 8)

***NO CLASS FRIDAY:** Happy Thanksgiving!

***MEET:** IN PERSON Monday; ONLINE Wednesday, all 9 – 10:00am

***SUBMIT:** FINAL ART PROJECT DUE SUNDAY

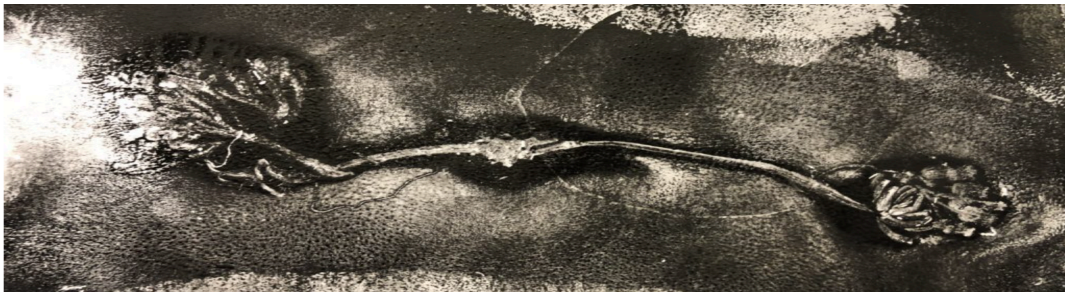
***POST:** Discussion FORUM by THURSDAY; student responses by SUNDAY

***TAKE:** ONLINE GRADED QUIZ THREE 11/22 – 11/29 (extended due to holiday)

Quiz covers memory

***BEGIN:** Coloring assignment 4 (Embryonic development)

(*DUE WEEK TEN on THURSDAY)



WEEK TEN (11/27 – 12/1)

Human Development; Optional Text (Chapter 10)

***MEET:** IN PERSON Monday; ONLINE Wednesday/Review Friday, all 9 – 10:00am

***SUBMIT:** Coloring assignment 4 DUE THURSDAY

***POST:** Discussion FORUM by THURSDAY; student responses by SUNDAY

***TAKE:** ONLINE GRADED QUIZ FOUR 11/29 – 12/3

Quiz covers language

FINAL EXAM

Online December 1 – 6th

PLEASE PUT THESE DATES ON YOUR CALENDAR NOW...

The final exam is scheduled for the **official final exam week at PSU**. You *MUST* be available during the official dates and times for the final exam, along with fellow students. The above date range will not be moved for any reason.

TITLE IX REPORTING OBLIGATIONS

Portland State is committed to providing an environment free of all forms of prohibited discrimination and sexual harassment (sexual assault, domestic and dating violence, gender or sex-based harassment and stalking). If you have experienced any form of sexual harassment, know that help and support are available. PSU has staff members trained to support survivors in navigating campus life, providing academic support and more. Information about PSU's support services on campus, including [confidential services](#) and [reporting options](#), can be found on PSU's [Sexual Misconduct Response website](#) or you may call a Confidential Advocate at 503.894.7982 or by scheduling [online](#). You may also report any incident of discrimination or discriminatory harassment, including sexual harassment, to the **Title IX Coordinator**, [Office of Equity and Compliance](#), or the [Office of the Dean of Student Life](#).

Please be aware that all PSU faculty members and instructors **are required to report** information of an incident that may constitute prohibited discrimination, including sexual harassment and sexual and relationship violence. This means that if you tell me about a situation of sexual harassment or discrimination, I have to share the information with the University's Title IX Coordinator or the Office of the Dean of Student Life. However, the information will be kept private and only those with a need to know will be provided with what you disclose.

Please complete the required student module [Understanding Sexual Misconduct and Resources](#) in Canvas, which provides information about PSU policy and resources. You may also report sexual and relationship violence to law enforcement on campus with [Campus Public Safety Office \(CPSO\)](#).

Or you may file an [anonymous report with Campus Public Safety Office](#) or a [Bias Incident report](#) with the [Bias Review Team \(BRT\)](#). PSU does not typically investigate the reports that are made through these two avenues. These reports help PSU understand what students and employees are experiencing on and around campus and provide support where needed.

The Center for Student Health & Counseling (SHAC)

Think SHAC First! [The Center for Student Health & Counseling \(SHAC\)](#) provides high quality, accessible, [medical](#), [counseling](#), [dental](#), and [health promotion services](#) to all PSU students taking 5+ credit hours, regardless of the type of insurance coverage. Office visits at SHAC are FREE!

Students taking 1+ credit hours can access [SHAC Dental Services](#). SHAC has an incredible staff of health care professionals who are dedicated to keeping you healthy so you can stay in the classroom and focus on learning. For a full list of services and more information visit pdx.edu/health-counseling.

Medical Excuse Notes: [The Center for Student Health and Counseling \(SHAC\)](#) does not provide medical excuse notes for absences from classes, labs, studios or exams, or for missed deadlines due to short-term illness, injury, or other clinical appointments. Visit the [SHAC Medical Excuse Policy](#) at pdx.edu/health-counseling/our-policies for more information.

Mental Health Emergencies: If you are having a mental health emergency and need to speak with someone immediately, come in to SHAC at ANY time during SHAC [hours of operation](#). After hours and weekends call the Multnomah County Crisis Line 503.988.4888 or use the 24/7 [mySSP mental health support resource](#) 866.743.7732.

Recordings in Zoom classes

We use technology for virtual meetings and recordings in this course. Use is governed by FERPA, the [Acceptable Use Policy](#) and PSU's [Student Code of Conduct](#). A record of all meetings and recordings is kept and stored by PSU, in accordance with the Acceptable Use Policy and FERPA. Your instructor will not share recordings of your class activities outside of course participants, which include fellow students, TAs/GAs/Mentors, and any guest faculty or community based learning partners that we may engage with. **You may not share recordings outside of this course.** Doing so may result in disciplinary action.