

# NORTHWEST NOGGIN

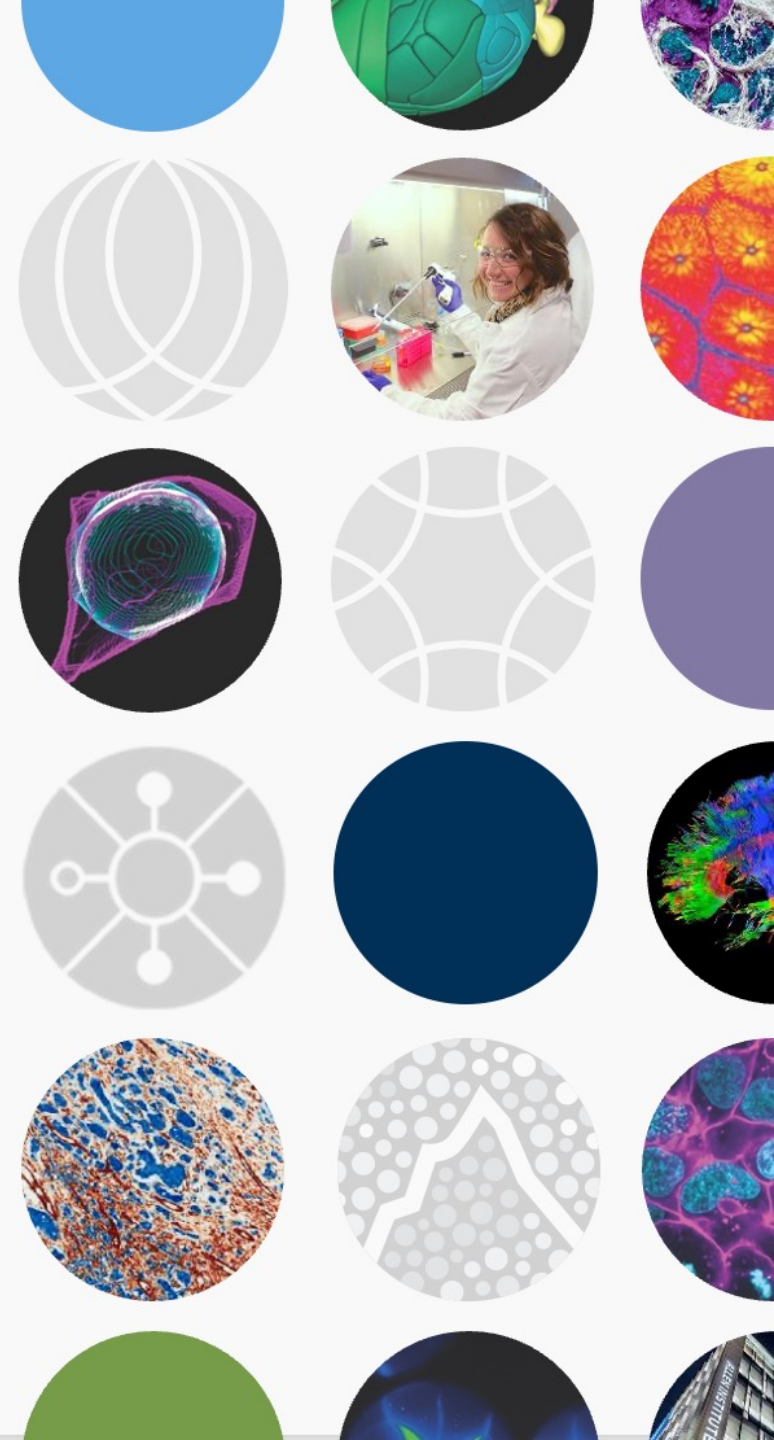
ENGAGING COMMUNITY THROUGH  
NEUROSCIENCE RESEARCH AND ART!







# Allen Institute: Open science in research and education





- Established 2003 by Paul G. Allen
- South Lake Union, Seattle, WA
- 800+ employees

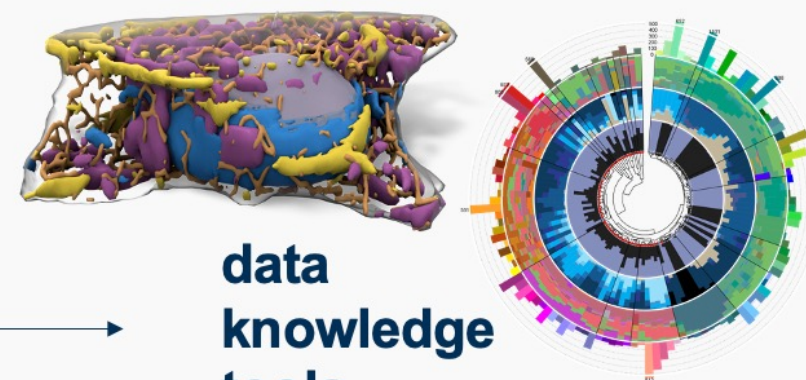
**hard problems**  
**complexity**  
**foundational biology**



**big science**  
**team science**  
**open science**



**data**  
**knowledge**  
**tools**



# Open science empowers research and education

## Open science:

- Datasets
- Lab protocols
- Equipment schematics
- Analysis and visualization software
- Findings and results

## Open science in research:

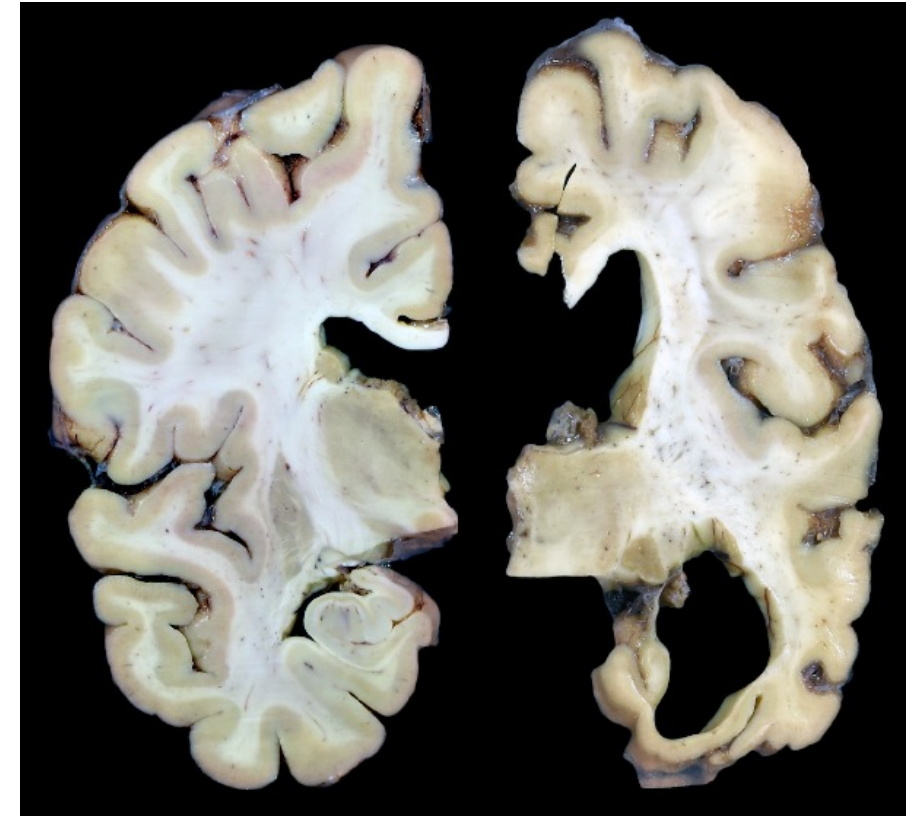
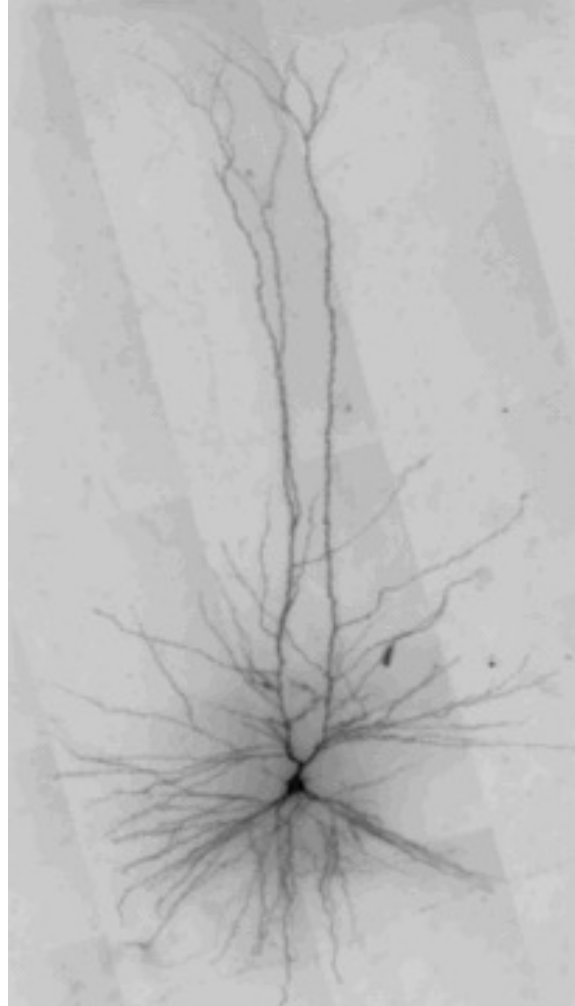
- Accelerate research across the field
- Promote transparency
- Empower low-resource researchers
- Enhance human health

## Open science in education:

- Share cutting-edge research topics
- Introduce analysis techniques and skills critical for science careers
- Enable student research projects with research-grade data



# Cutting-edge neuroscience impacts research and health









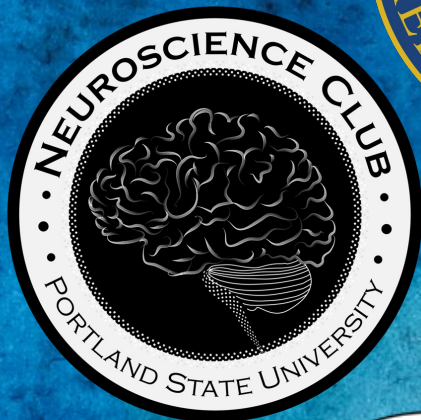
# NORTHWEST NOGGIN

ENGAGING COMMUNITY THROUGH  
NEUROSCIENCE RESEARCH AND ART!





# THANK YOU



DR. PAUL ARAVICH,  
Eastern Virginia Medical School  
("the brains")





# ALL VOLUNTEER

ELEVEN YEARS (SINCE 2012)!  
NO ADMISSION - NO TUITION - OPEN TO EVERYONE  
65,000+ PUBLIC K12 STUDENTS/COMMUNITY MEMBERS  
LOCAL/NATIONAL/INTERNATIONAL COLLABORATORS





# GO PLACES

- WHERE STEM PROGRAMS DON'T GO
- WHERE MONEY AND RESOURCES DON'T GO
- PUBLIC K-12 SCHOOLS
- RURAL AND URBAN COMMUNITIES
- HOUSELESS YOUTH NONPROFITS
- CORRECTIONAL FACILITIES

Siletz, Amity & Willamina, OR  
Pop: 4000

Davenport, WA  
Pop: 1700

Astoria, OR  
Pop: 10,000

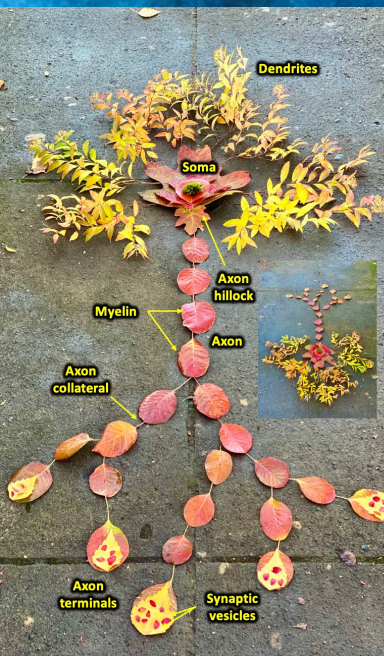
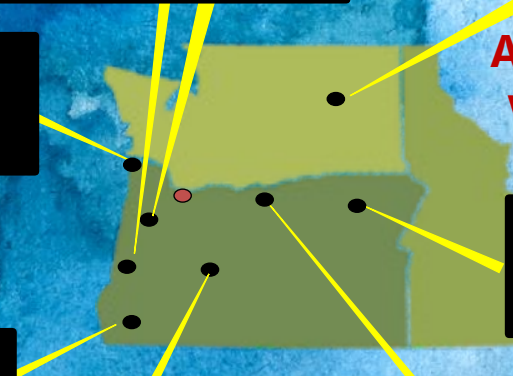
A few places we've been

La Grande, OR  
Pop: 13,000

Meservy Meadows, OR  
Pop: ~40

Sisters, OR  
Pop: 3081

Heppner & Lone, OR  
Pop: 1240



## Youth get visual, hands-on experience with the brain

NW Noggin, a neuroscience outreach nonprofit, reached out to youth at MacLaren Youth Correctional Facility this week to teach about brain development.



## Noggins on the Coast

**Astoria-Megler Bridge**  
A four mile long steel cantilever through truss bridge connecting Oregon and Washington state



**Corpus Callosum**  
White matter (myelinated neuron axons) connecting the cortex in both our left and right hemispheres







Sisters, Oregon

**GO PLACES**



# LISTEN

- LIVED EXPERIENCES
- RELEVANT KNOWLEDGE
- SEEING OTHER PEOPLE



Heppner, OR



Knappa, OR

## HOMELESSNESS & THE BRAIN

Portland, OR

Thurs, Oct 19th  
10am - 1pm



Sisters, OR

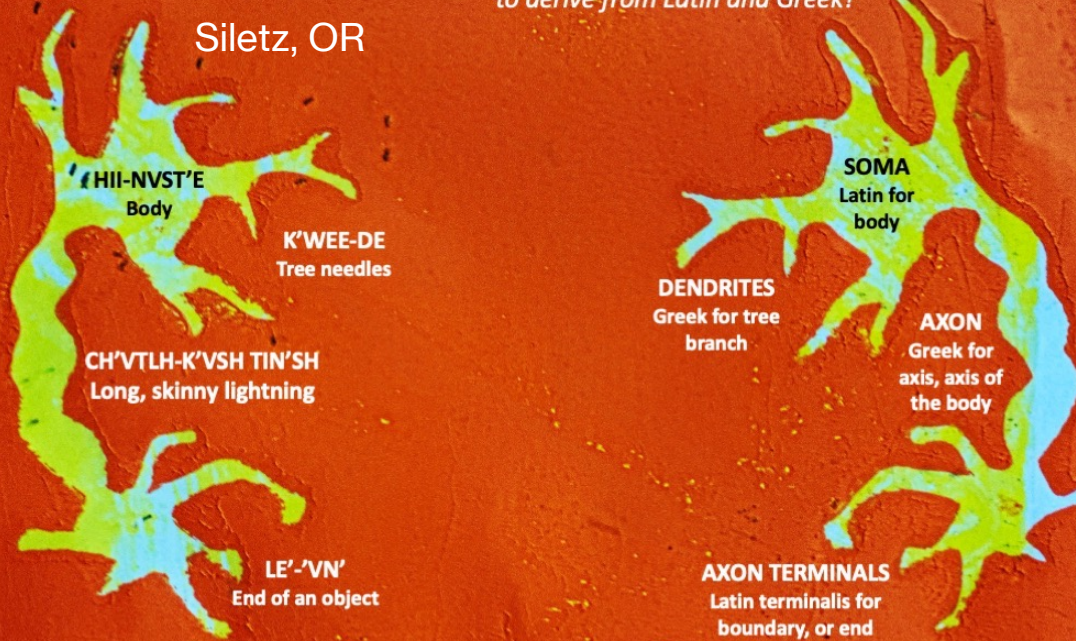
Portland, OR



## DEE-NI NEURON

Siletz, OR

*Do neuroanatomical terms have to derive from Latin and Greek?*



#showusyourbraincell

nwnoggin.org



# SHARE STORIES

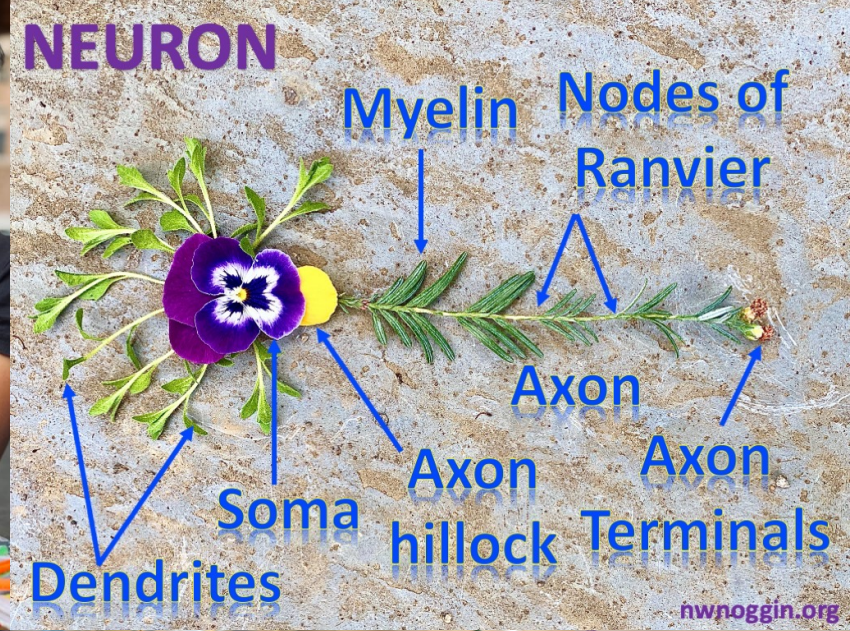
- EMPOWER NEW VOICES
- BROADEN THE CONVERSATION
- MAKE PUBLIC INVESTMENT IN RESEARCH RELEVANT
- INVITE NEW PARTICIPANTS, PERSPECTIVES & **BRAINS**





# MAKE ART

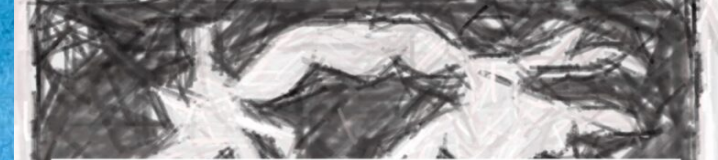
- ENGAGEMENT
- PERSONAL RELEVANCE
- SELF-AWARENESS AND **EMPATHY**





# INFORM POLICY

- RESEARCH TOPICS ARE POPULAR!
- INTERDISCIPLINARY/STEAM APPROACHES WORK
- 1. SCHOOL START TIMES FOR ADOLESCENTS
- 2. PERMANENT STANDARD TIME
- 3. HOUSING FIRST



## Healthy start times

VANCOUVER  
PUBLIC SCHOOLS



### What is changing?

We are changing our schools' start times schedule next year based on learnings from our community feedback as well as the most current research about adolescent development. We plan to solidify our bell schedules and announce the official new times before the last day of school on June 20, 2023.



Sleep  
Anxiety  
Depression  
ADHD  
Autism  
Development  
Perception  
Gender  
Drugs  
Memory  
Language  
Racial Bias

*What you do  
has relevance  
GO PLACES*





# SHAKE IT UP

*SUPPORT INNOVATION, NOT INSTITUTIONS; MORE ACCESSIBLE GRANTS FOR EDUCATORS, ARTISTS, SMALLER LOCAL NONPROFITS*



-EXISTING INSTITUTIONS SUPPORT THEMSELVES. THEY GET RESOURCES, BUT DON'T NECESSARILY INNOVATE OR EMPOWER NEW VOICES.

*70% indirects?!*

-GOING PLACES TO LISTEN, SHARE STORIES, MAKE ART AND COLLABORATE ENGAGES AND INSPIRES MORE PEOPLE, *GENUINELY* INCREASING DIVERSITY IN RESEARCH AND PUBLIC POLICY.

-LIKE DEVELOPING BRAINS IN CHANGING CIRCUMSTANCES, RISK AND PLASTICITY ARE REQUIRED TO ADAPT, DISCOVER, INNOVATE AND THRIVE.



# TOMORROW

-NOGGIN IN DC PUBLIC SCHOOLS 🧠🎨💚😊







# BRINGING CHANGE

- Outreach informs our education, which informs our outreach
- STEAM has a lasting influence on the community



### NEURON HAT KIT

BASE (C1)	CELL BODY (C2)	AXON (C3)	DENDRITES (C4)	MYELIN SHEATH (C5)

REQUIRES: 14 PIPE CLEANERS  
PAIR OF SCISSORS





# EMPOWERING COMMUNITIES & OFFSETTING DISPARITY

- Knowledge fosters agency
- Neuroscience education combats neuromyths (misinformation about the brain)
- Outreach helps break down detrimental stigmatization, empowering communities through personal engagement

