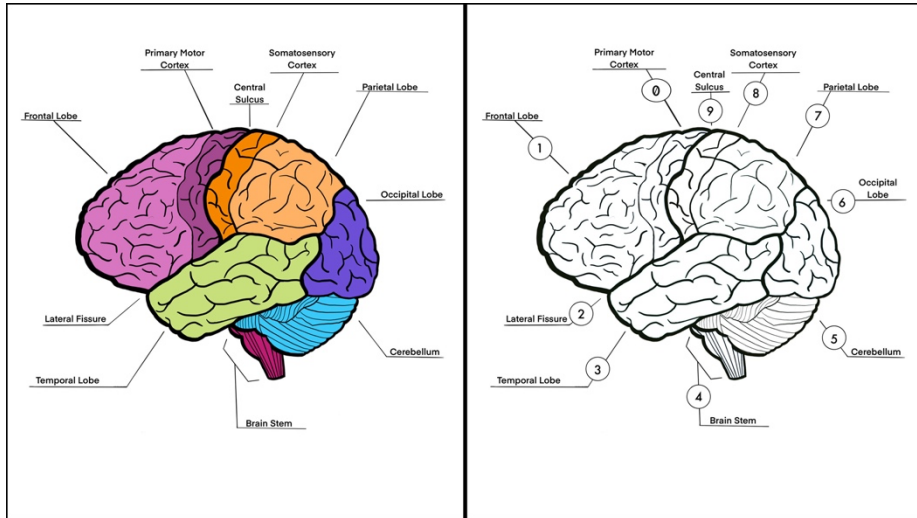


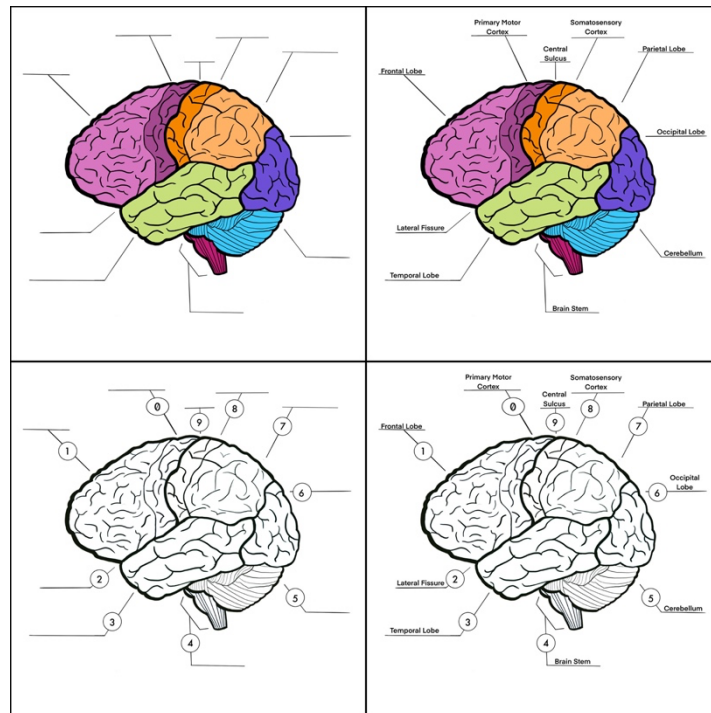
BINGO INSTRUCTIONS

These bingo-style cards are intended to be used by educators and are customizable for your lesson plan and classroom.

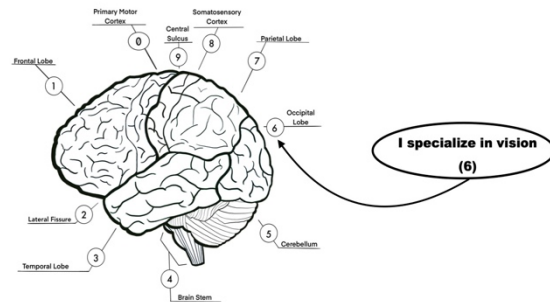
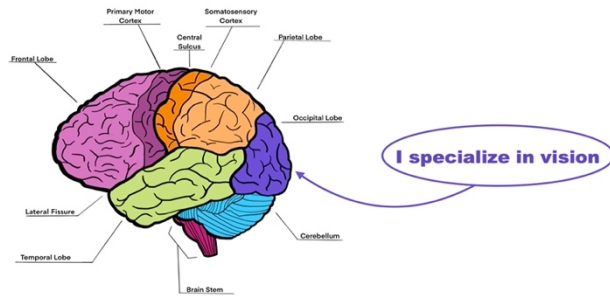
There is a colored set of boards and clues, as well as a black-and-white set of boards with corresponding clues.



Each set contains a blank brain as well as a labeled brain.



Each set of clues (color coordinated and black and white) contain the same clues. They are just coded differently to make verifying a students win easier.



Using the clues:

- 🧠 Once you have decided on which set to use, print the boards and the corresponding clues. Make sure double-sided printing is turned off. (you are welcome to stop here and simply check off clues as you call them out to students!)
- 🧠 After you have printed your clues cut along the lines to create individual squares.
- 🧠 Fold up the individual squares and place them in a container.
- 🧠 Draw clues from the container.
- 🧠 Set clues aside after calling them out to students.
- 🧠 Once a student calls out bingo, you can use the pulled clues to verify a win!

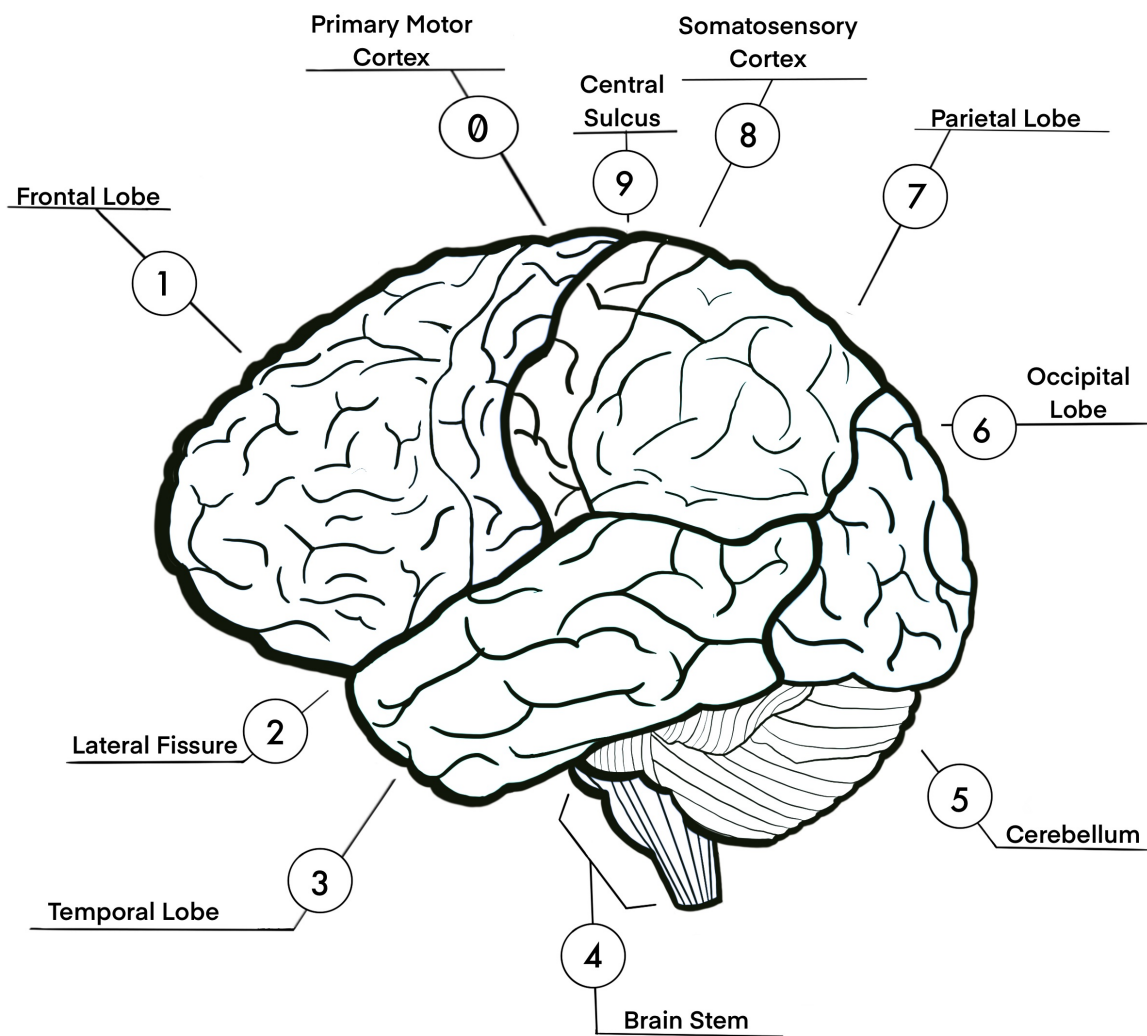
Extras:

By creating a text box on the pdf, you can add instructions to the boards if that better facilitates your vision of this activity.

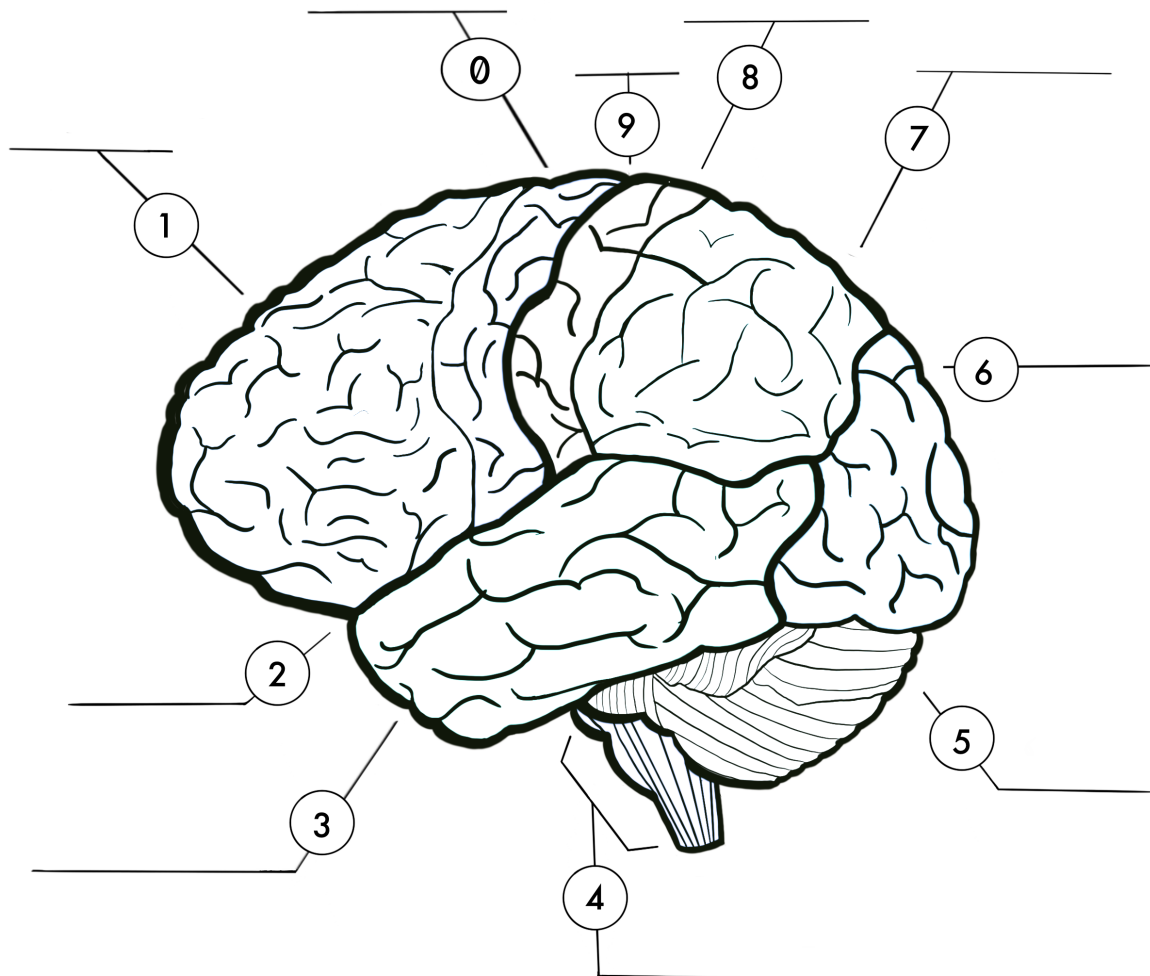
You can use tokens, chips, stickers, or candy when marking the spaces on the brains. Another possible way to mark the spaces is by using paint and q-tips or pom-poms



BRAINIAC BINGO



BRAINIAC BINGO



<p>I contain 3 parts (4)</p>	<p>I contain the midbrain, the pons, and the medulla (4)</p>	
<p>I contain more than 1/2 the neurons in your body (5)</p>	<p>I am also known as the “little brain” (5)</p>	<p>I am responsible in part for coordination of movement (5)</p>
<p>I am responsible in part for your learning of motor skills (5)</p>	<p>I am responsible in part for our sense of balance (5)</p>	<p>I control some aspects of personality (2)</p>
<p>I am in charge of executive functions (2)</p>	<p>I help make decisions about your behavior (2)</p>	<p>I am the planning and organizing part of the brain (1)</p>
<p>I am the back part of the brain (6)</p>	<p>I specialize in vision (6)</p>	<p>I contain the primary visual cortex (6)</p>

I am responsible for voluntary body movement (0)	I am found in the frontal lobe (0)	
I contain the hippocampus and help with memory (3)	I play a role in hearing and understanding language (3)	I am located near the lower part of the brain (3)
I am the first to process information about touch, prop reception, pain, and temperature (8)	You can find me in the parietal lobe (8)	I am separated from the primary motor cortex by the central sulcus (8)
I am the upper middle part of the brain (7)	I contain the somatosensory cortex (7)	I am behind the frontal lobe (7)
I am a major landmark & separate the temporal lobe from frontal & parietal lobes (Lateral Fissure) (2)	I am a major landmark between the frontal and parietal lobes (Central sulcus) (9)	I separate the primary motor cortex and somatosensory cortex (Central sulcus) (9)