

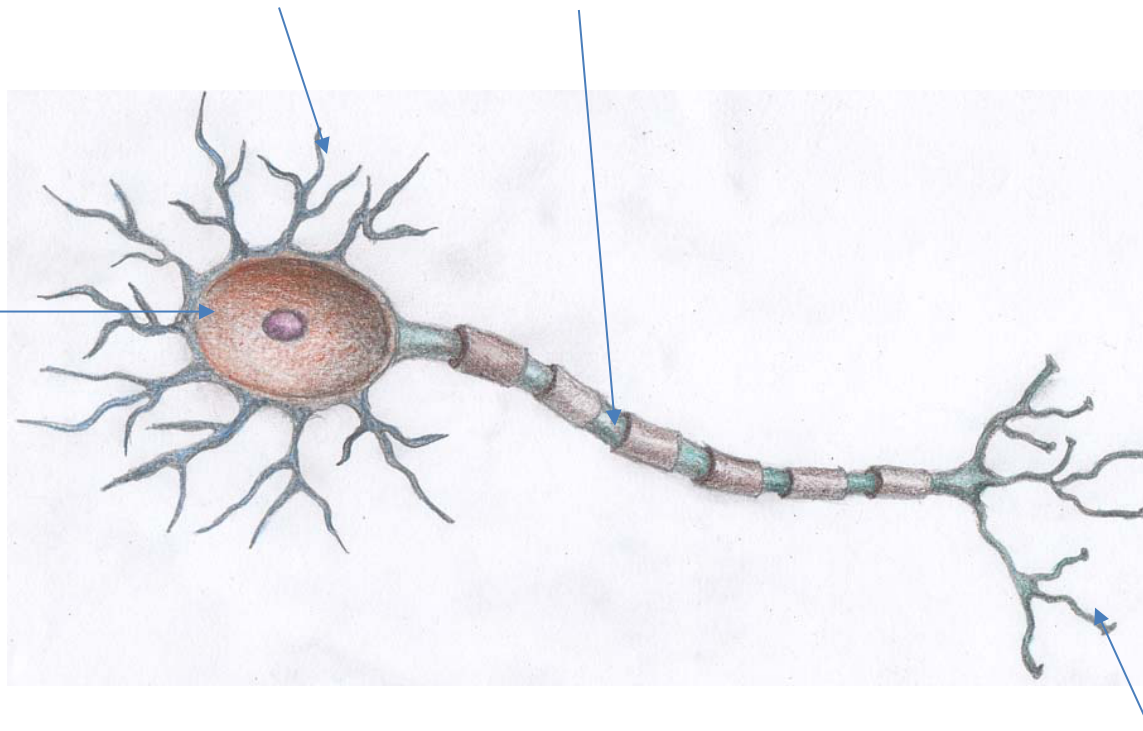
# Neurons are a type of brain cell

The majority of neurons share some basic features

## Dendrites

(Receive input from other neurons at gaps called **synapses**)

**AXON** (Carries electric message)



## Cell Body

(or Soma, location of **nucleus** and cell **DNA**)

**Axon Terminals**  
(release of **neurotransmitters**)

Take a look around you, what things do you see that share those structures?

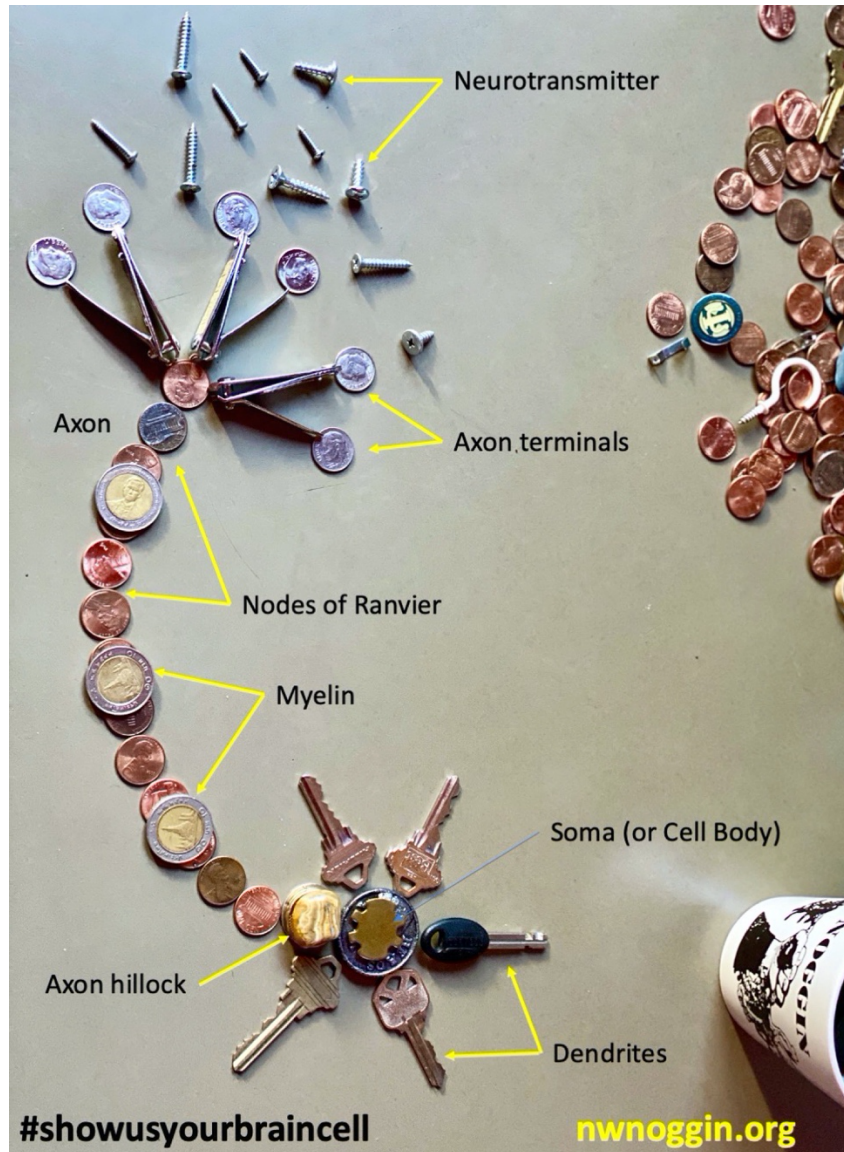


Can you construct a neuron out of things that you find?

What things for you represent the function of a neuron? Or the function of specific parts of a neuron? Do those things have personal meaning, or say something about you?



Beyond those basic structures are there more features of a neuron that you can identify in your found neuron?





Consider different types and forms of neurons, and other specialized cells in the brain. Maybe **cone photoreceptors** from the eye, or **hair cells** from the inner ear.

